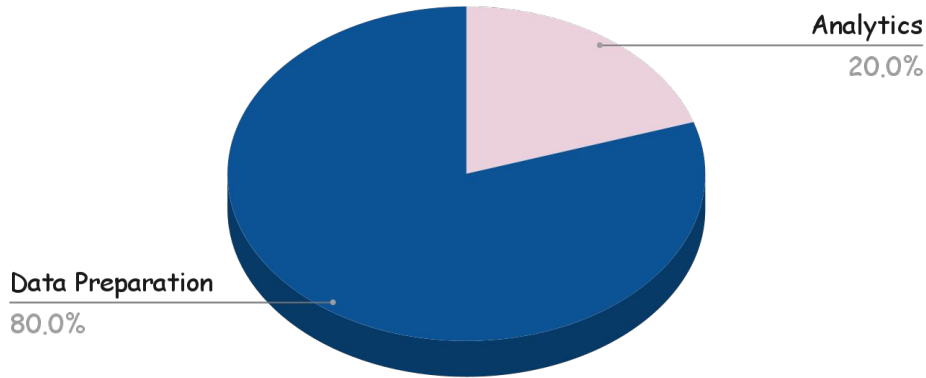


Data Visualisasi

Week 3 - Tools, Data Preparations

The 80/20 Rule of Data Science

The Pareto Principle



Ekspektasi vs. Realita

Banyak yang mengira pekerjaan di bidang data 100% hanya membuat grafik dan analisis machine learning

Faktanya

80% waktu dihabiskan untuk menemukan, membersihkan, dan merapikan data (Data Preparation). Hanya 20% waktu yang digunakan untuk analisis aktual dan visualisasi.

GIGO (Garbage In, Garbage Out)

- Sebagai apapun algoritma atau seindah apapun dashboard yang kalian buat, jika data mentahnya kotor (salah ketik, null, duplikat), maka hasil akhirnya adalah kebohongan (informasi sampah).
- Visualisasi tidak bisa memperbaiki data yang salah, ia hanya memperbesar kesalahan tersebut agar terlihat lebih jelas.



Prepare your Data !!

Data Preparation adalah proses mengumpulkan, menggabungkan, menyusun, dan menata data agar siap digunakan untuk aplikasi Business Intelligence atau analitik.

Tugas Utama:

- ❑ Mengatasi Missing Values (Data kosong)
- ❑ Menyeragamkan format (misal: "JKT", "Jakarta", "DKI Jakarta").
- ❑ Menjaga Kebenaran & Validitas

Tools



Why Choose Tableau?

- Free (Tableau public)
- Fitur pengolahan dan visualisasi datanya sama persis dengan versi profesional
- User friendly

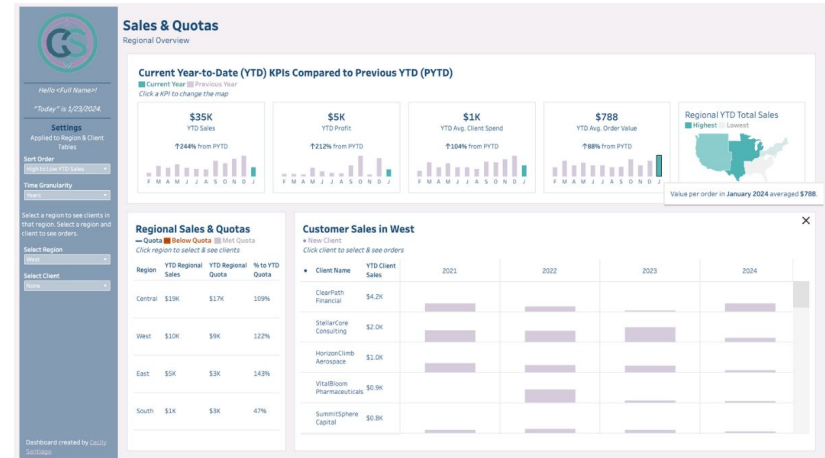
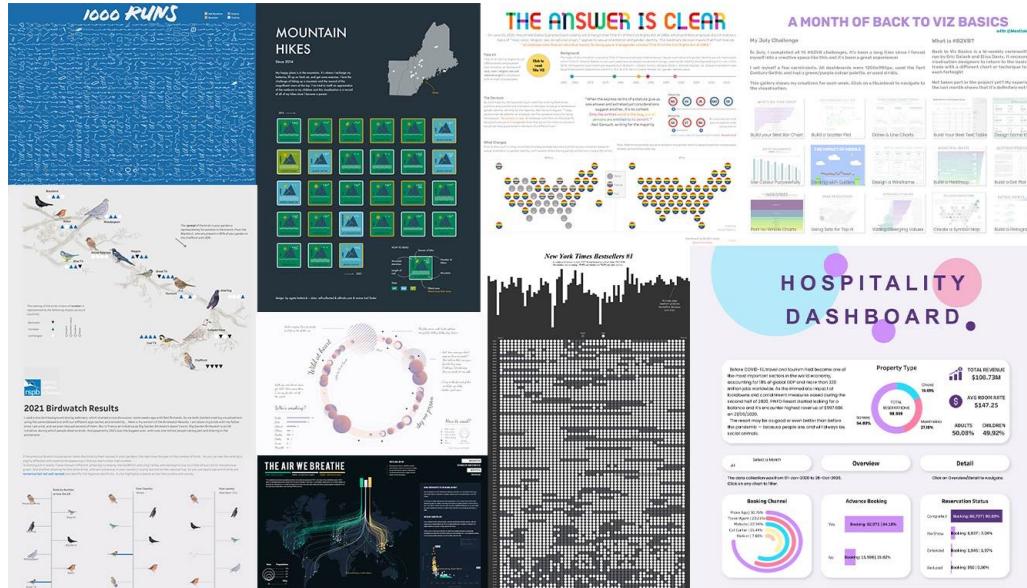


Tableau Public



Platform visualisasi data gratis berbasis cloud untuk membuat dan membagikan dashboard secara publik.

Sumber : <https://www.tableau.com/blog/beginners-guide-tableau-public>

Create Account



- ❑ Buka browser dan akses: public.tableau.com
- ❑ Klik tombol "Sign Up"
- ❑ Isikan data kalian

Sumber : <https://www.tableau.com/blog/beginners-guide-tableau-public>

Instalasi



Connect to data you're interested in with Tableau's drag-and-drop interface. Effortlessly create interactive graphs, stunning maps, and live dashboards in minutes. Save your work to your local desktop or publish your viz to your Tableau Public profile to build your visual portfolio. Open to all—and it's free.

Almost there!

It only takes 15 seconds to fill out. If you're already registered, [sign in](#).

Yes, I would like to receive marketing communications regarding Salesforce products, services, and events. I can unsubscribe at any time.

By submitting this form, you confirm that you agree to the processing of your personal data, including transfer and processing outside of Indonesia, as described in the [Privacy Statement](#).

Download the app

Download dan Install

<https://www.tableau.com/products/public/download>

Data Source Tab

Download Sample - Superstore.xls dataset sample data dari <https://public.tableau.com/app/learn/sample-data>

- A. Left pane : Menunjukkan nama file atau data yang terhubung.
- B. Canvas (logical layer) : Area untuk membuat relationship antar table logis..
- C. Canvas (physical layer) : Buka dengan double-click table di logical layer. Digunakan untuk membuat join dan union antar tabel.
- D. Data grid : Menampilkan 1.000 baris pertama dari data pada data source.
- E. Metadata grid : Menampilkan daftar field/kolom dalam bentuk baris.

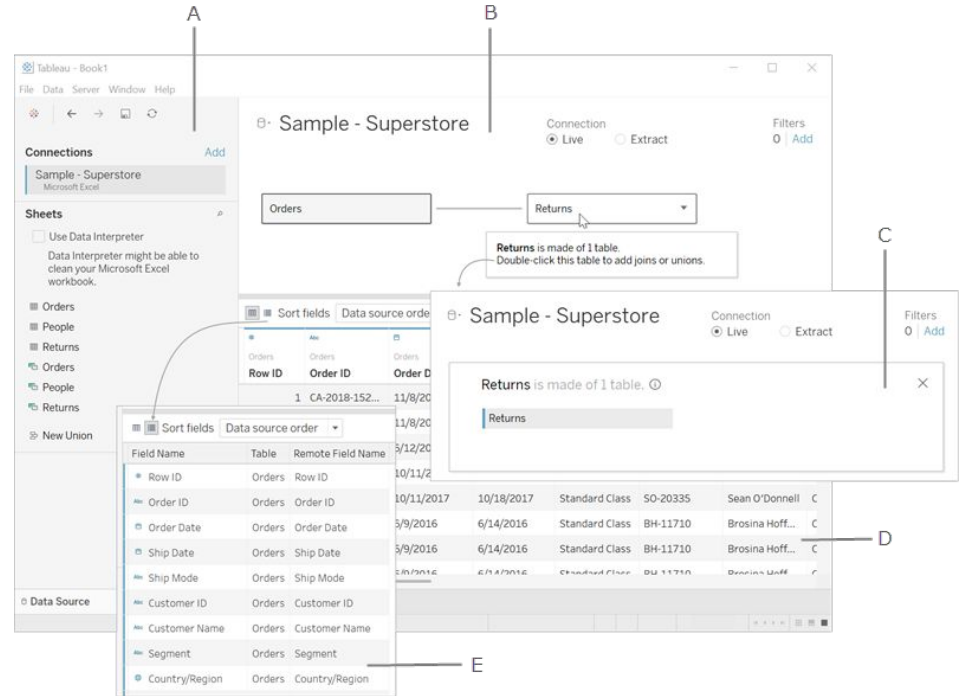










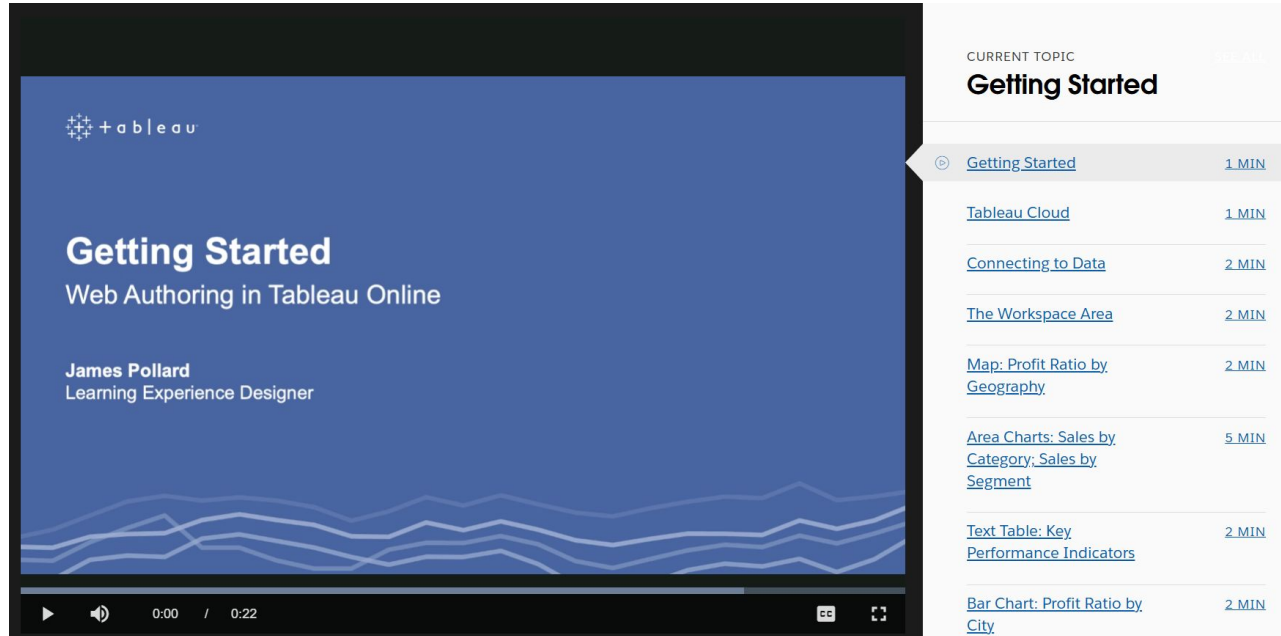
Tableau Data Types

Icon	Data Type
	Text / String values
	Date values
	Date & Time values
	Numerical values (decimal/whole)
	Boolean values
	Geographic values (used with Maps)
	Image role (used with image link URLs)
	Cluster Group

Sumber:
<https://medium.com/%40deepak.holla/understanding-tableau-concepts-all-about-data-types-in-tableau-desktop-e8a1bc82aa0e>

Free Training Videos

<https://www.tableau.com/learn/training>



The screenshot shows a video player interface for a Tableau training video. The video content area displays the Tableau logo, the title "Getting Started", the subtitle "Web Authoring in Tableau Online", and the presenter's name "James Pollard" with his title "Learning Experience Designer". The video player controls at the bottom show a play button, a volume icon, and a progress bar at 0:00 / 0:22.

On the right side of the video player, there is a table of contents for the training series. The current topic is "Getting Started".

CURRENT TOPIC	
Getting Started	1 MIN
Getting Started	1 MIN
Tableau Cloud	1 MIN
Connecting to Data	2 MIN
The Workspace Area	2 MIN
Map: Profit Ratio by Geography	2 MIN
Area Charts: Sales by Category: Sales by Segment	5 MIN
Text Table: Key Performance Indicators	2 MIN
Bar Chart: Profit Ratio by City	2 MIN

Instruksi

- 1) Buat akun Tableau Public
- 2) Unduh dan lakukan instalasi Tableau Desktop Public dari link berikut
<https://www.tableau.com/products/public/download>
- 3) Buat laporan dengan format NPM_Nama_Tugas1.pdf. Laporan berisi jawaban beserta screenshot Tableau. File kemudian di upload di ILMU2

Tugas

CONNECT & UNDERSTAND DATA

- 1) Import dataset Sample - Superstore.xls dari <https://public.tableau.com/app/learn/sample-data>
- 2) Kemudian jawab pertanyaan berikut:
 - A. Berapa jumlah baris data pada tabel Orders?
 - B. Berapa jumlah kolom?
 - C. Apa saja tipe data yang digunakan?
 - D. Kolom mana yang bertipe Date?
 - E. Kolom mana yang bertipe String?

Tugas

DATA TYPE CHECK

- 1) Ubah Postal Code menjadi String
- 2) Pastikan Order Date & Ship Date bertipe Date
- 3) Identifikasi minimal 1 field yang menurut kalian perlu diubah (sertakan alasan)

RENAME & STANDARDIZATION

- 1) Rename minimal 3 field
- 2) Gunakan format penamaan yang terstruktur (tanpa underscore berlebihan, konsisten bahasa)